

Press Forward

Female Version

Nik Day

Arr. by Nik Day & Matt Nielsen

♩ = 97

Voice

Piano

p

5

9

No we ___ are not wan - derers On the path - way of life ___

13

13

We've been gi - ven di - re - ction And we'll fol - low the light

13

13

13

Detailed description: This block contains the first system of music, measures 13-15. It features a vocal line and a piano accompaniment. The vocal line starts with a rest, followed by the lyrics 'We've been given direction' and 'And we'll follow the light'. The piano accompaniment consists of a right-hand part with chords and moving lines, and a left-hand part with a steady bass line.

16

16

We all — have a pur - pose That we'll learn as we go

16

16

16

Detailed description: This block contains the second system of music, measures 16-19. The vocal line begins with a rest, then sings 'We all have a purpose' and 'That we'll learn as we go'. The piano accompaniment continues with similar harmonic support.

20

20

But on - ly one — road will lead us Lead us home

20

20

20

Detailed description: This block contains the third system of music, measures 20-23. The vocal line starts with a rest, then sings 'But only one road will lead us' and 'Lead us home'. The piano accompaniment provides the harmonic foundation.

24

— We will Press for - ward Press for - ward On - ward with

24

mp

28

faith We will Press for - ward To - ge - ther On - ward

28

32

Press for - ward Press for - ward

32

p

37

There is hope — for to-mor - row What - e - ver may come

37

mp

40

— If we keep — our eyes — on the Sa - vior and ne -

40

43

- ver let go — of His love — We will Press for - ward

43

mf

46

Press for - ward On - ward with faith We will Press for - ward

Detailed description: This block contains the vocal line for measures 46 through 49. The melody starts with a dotted quarter note on G4, followed by eighth notes on A4, B4, and C5. It then moves to a dotted quarter note on B4, followed by eighth notes on A4, G4, and F4. The phrase continues with a dotted quarter note on E4, a quarter note on D4, and a quarter note on C4. The final measure features a dotted quarter note on B3, followed by eighth notes on A3, G3, and F3.

46

Detailed description: This block contains the piano accompaniment for measures 46 through 49. The right hand plays a series of chords, primarily triads and dyads, in a steady eighth-note pattern. The left hand provides a bass line with eighth notes and quarter notes, mirroring the vocal line's rhythm.

50

To - ge - ther On - ward Press for - ward

Detailed description: This block contains the vocal line for measures 50 through 53. The melody begins with a dotted quarter note on G4, followed by eighth notes on A4, B4, and C5. It then has a dotted quarter note on B4, followed by a quarter rest. The phrase concludes with a dotted quarter note on E4, a quarter note on D4, and a quarter note on C4.

50

cresc.

Detailed description: This block contains the piano accompaniment for measures 50 through 53. The right hand continues with chords, and the left hand maintains the bass line. A *cresc.* (crescendo) marking is placed above the right hand in measure 53.

54

We will take _ the road _ _ less tra - veled

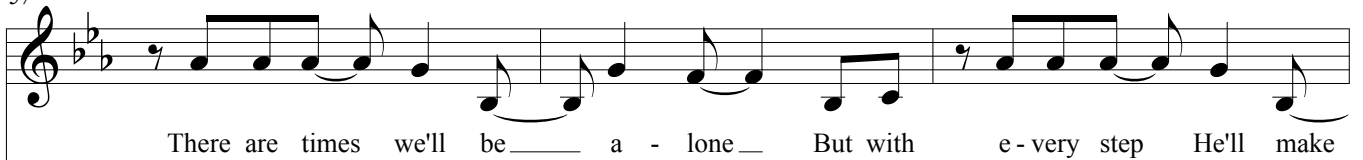
Detailed description: This block contains the vocal line for measures 54 through 57. The melody starts with a dotted quarter note on G4, followed by eighth notes on A4, B4, and C5. It then has a dotted quarter note on B4, followed by eighth notes on A4, G4, and F4. The phrase continues with a dotted quarter note on E4, a quarter note on D4, and a quarter note on C4.

54

f

Detailed description: This block contains the piano accompaniment for measures 54 through 57. The right hand plays chords, and the left hand plays the bass line. A *f* (forte) marking is placed above the right hand in measure 54.

57



57

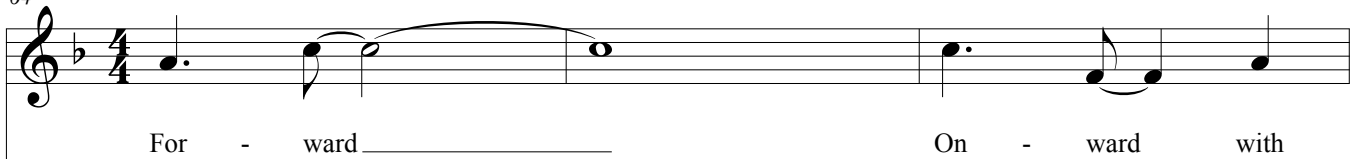
60



60

p

64



64

67

faith We will Press for - ward To - ge - ther

This system contains measures 67, 68, and 69. The vocal line is in a single treble clef with a key signature of one flat. The piano accompaniment consists of two staves: a right-hand treble clef staff and a left-hand bass clef staff. The piano part features a steady eighth-note accompaniment in the right hand and a bass line with chords and moving lines in the left hand.

70

On - ward We will Press for - ward

This system contains measures 70, 71, and 72. The vocal line continues from the previous system, with a long note on 'ward' in measure 70. The piano accompaniment continues with the same rhythmic pattern as in the previous system.

73

Press for - ward On - ward with faith We will

This system contains measures 73, 74, and 75. The vocal line continues with the lyrics 'Press for - ward On - ward with faith We will'. The piano accompaniment maintains the consistent eighth-note accompaniment and bass line.

76

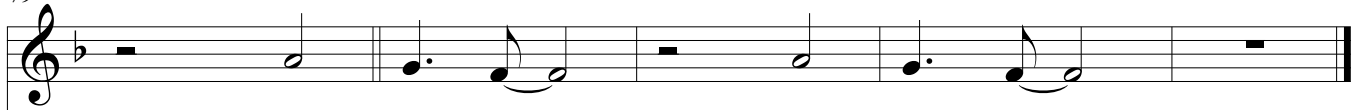


Press for - ward To - ge - ther On - ward

76

Piano accompaniment for measures 76-78. The right hand features a rhythmic pattern of eighth notes and chords, while the left hand provides a steady bass line with chords.

79



Press for - ward Press for - ward

79

Piano accompaniment for measures 79-82. The right hand features a rhythmic pattern of eighth notes and chords. The left hand provides a steady bass line with chords. Dynamics include *mp* (mezzo-piano) and *dim.* (diminuendo).