

Lift Your Eyes

Nik Day

Arr. by Matt Nielsen

♩ = 105

Voice

Piano

p

4

Why are you look - ing down With your face — to-wards the

4

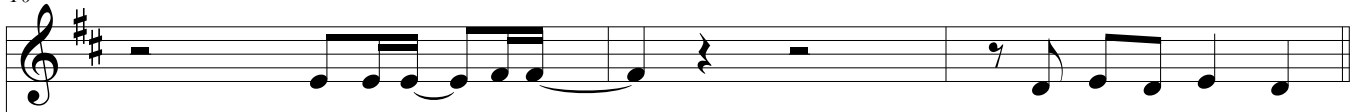
7

ground You're a daugh-ter of a King Of great worth and roy-al - ty

7

Lift Your Eyes

10



Fit to wear a crown —

Why are you hol - ding

The piano accompaniment for measures 10-12 is written in a grand staff with a key signature of two sharps. The right hand plays chords: a whole rest in measure 10, a D5 chord in measure 11, and a C5 chord in measure 12. The left hand plays a rhythmic accompaniment of eighth notes: G3, A3, B3, C4 in measure 10; D4, E4, F4, G4 in measure 11; and A4, B4, C5, D5 in measure 12.

13



on

Think - ing that you don't be - long —

The piano accompaniment for measures 13-15 is written in a grand staff with a key signature of two sharps. The right hand plays chords: a D5 chord in measure 13, a C5 chord in measure 14, and a D5 chord in measure 15. The left hand plays a rhythmic accompaniment of eighth notes: G3, A3, B3, C4 in measure 13; D4, E4, F4, G4 in measure 14; and A4, B4, C5, D5 in measure 15.

16



You are loved more than you know

So take your doubts and let them go

The piano accompaniment for measures 16-18 is written in a grand staff with a key signature of two sharps. The right hand plays chords: a D5 chord in measure 16, a C5 chord in measure 17, and a D5 chord in measure 18. The left hand plays a rhythmic accompaniment of eighth notes: G3, A3, B3, C4 in measure 16; D4, E4, F4, G4 in measure 17; and A4, B4, C5, D5 in measure 18.

18

— And look to-wards the sun If you lift your eyes

18 *mp*

22

To the on - ly one who gives you life He will take you and He'll

22

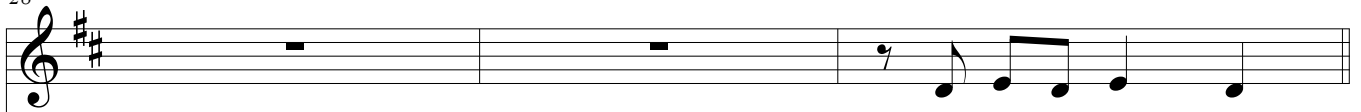
25

make you shine Just lift your eyes

25 *p*

Lift Your Eyes

28



Why are you so a -

Piano accompaniment for measures 28-30. Measure 28: Bass clef, G2, A2, B2, C3. Treble clef, G4, A4, B4, C5. Measure 29: Bass clef, G2, A2, B2, C3. Treble clef, G4, A4, B4, C5. Measure 30: Bass clef, G2, A2, B2, C3. Treble clef, G4, A4, B4, C5. Dynamics: *pp* starting in measure 30.

31



fraid

Just put your fears a - way

Piano accompaniment for measures 31-33. Measure 31: Bass clef, G2, A2, B2, C3. Treble clef, G4, A4, B4, C5. Measure 32: Bass clef, G2, A2, B2, C3. Treble clef, G4, A4, B4, C5. Measure 33: Bass clef, G2, A2, B2, C3. Treble clef, G4, A4, B4, C5. Dynamics: *mp* starting in measure 31.

34



And be the girl_ you're meant to be_ Look to Him for e - very-thing

Piano accompaniment for measures 34-36. Measure 34: Bass clef, G2, A2, B2, C3. Treble clef, G4, A4, B4, C5. Measure 35: Bass clef, G2, A2, B2, C3. Treble clef, G4, A4, B4, C5. Measure 36: Bass clef, G2, A2, B2, C3. Treble clef, G4, A4, B4, C5.

36

And make this world a bet-ter place — If you

pp

39

lift your eyes To the on - ly one who gives you life

mf

42

He will take you and He'll make you shine Just lift your eyes

45

You're not look - ing high e - nough You're

dim. *p*

48

not look - ing high e - nough You're not look - ing high e - nough Just lift your lift your

cresc.

51

eyes Not look - ing high e - nough You're not look - ing high e - nough You're

53

not look - ing high e - nough Just lift your lift If you lift your eyes

mf *subito p*

56

To the on - ly one who gives you life He will take you and He'll make you shine

60

Just lift your eyes — If you

pp

Lift Your Eyes

63



lift your eyes To the on - ly one who gives you life

63

mf

66



He will take you and He'll make you shine Just lift your eyes

66

69



Just lift your eyes Not look - ing high e - nough You're

69

p

72

not look - ing high e - nough You're not look - ing high e - nough Just

72

cresc.

Detailed description: This system contains measures 72 and 73. The vocal line (top staff) has a melody with eighth and quarter notes. The piano accompaniment (middle and bottom staves) features a steady eighth-note bass line and a treble line with chords and eighth notes. A 'cresc.' marking is present in the piano part starting at measure 73.

74

lift your lift your eyes. Not look - ing high e - nough You're

74

Detailed description: This system contains measures 74 and 75. The vocal line continues with the melody. The piano accompaniment maintains the same rhythmic pattern as the previous system.

76

not look - ing high e - nough You're not look - ing high e - nough Just

76

Detailed description: This system contains measures 76 and 77. The vocal line repeats the melody from measure 72. The piano accompaniment continues with the same rhythmic accompaniment.

78

lift your lift your eyes. —

mf *dim.* *p*