

I Have Work Enough to Do

Women's Choir, Piano and Flute

Josephine Pollard

William J. Kirkpatrick
Arr. by Marlene D. Bartlett

With Feeling ♩ = 95-105

Flute

Piano

S.S.A.

7

mp *tr*

Unison *mp*

I have

12

work e - nough to do, Ere the sun goes down,

I Have Work Enough to Do

16 *tr*

For my - self and kin - dred too, Ere the sun goes

20

down: Ev' ry i - dle whis - per still - ing With a pur - pose firm and

24

will - ing. All my dai - ly tasks ful - fill - ing, Ere the sun goes

I Have Work Enough to Do

28

Flute

Sop. 1
Sop. 2

Alto

Piano

down._____

mf I must speak the lov - ing

mf I must speak the lov - ing

32

word, Ere the sun goes down._____ I must

word,_____ Ere the sun goes down._____ I must

I Have Work Enough to Do

36

let my voice be heard, Ere the sun goes down. Ev-ry cry of pit - y

let my voice be heard. Ere the sun goes down. Ev-ry cry of pit - y

41

heed - ing, For the in - jured in - ter - ced - ing, To the light the lost ones lead - ing, Ere the

heed - ing, For the in - jured in - ter - ced - ing, To the light the lost ones lead - ing, Ere the

I Have Work Enough to Do

46

sun goes down.

sun goes down.

51

As I jour - ney on my way, Ere the sun goes down, God's com -

As I jour - ney_ on my way,_ Ere the sun goes down,_ God's com -

I Have Work Enough to Do

56

mands I must o - bey, Ere the sun goes down. There are sins that need con-

mands I must o - bey, Ere the sun goes down. There are sins that need con-

61

fess - ing; There are wrongs that need re - dress-ing If I would o - btain the bless-ing, Ere the

fess - ing; There are wrongs that need re - dress-ing If I would ob - tain the bless-ing, Ere the

I Have Work Enough to Do

66

mp

mp *Unison, slightly slower*

sun goes down. There are sins that need confessing; There are

sun goes down. There are sins that need confessing; There are

mp *Unison, slightly slower*

71

wrongs that need redressing If I would obtain the blessing, Ere the sun

I Have Work Enough to Do

76 *rit.*

goes down

80

p

I have work e-nough to do.

Flute

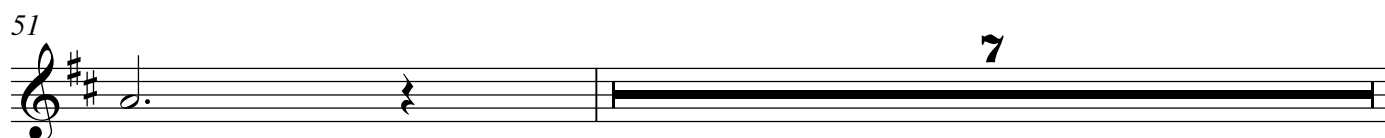
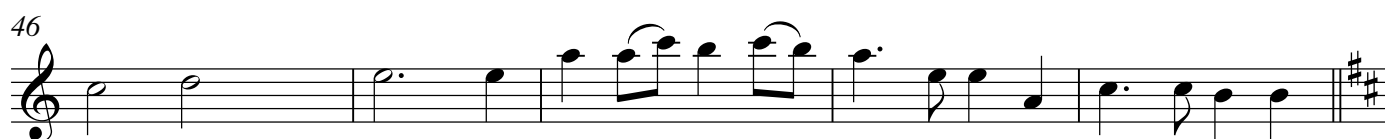
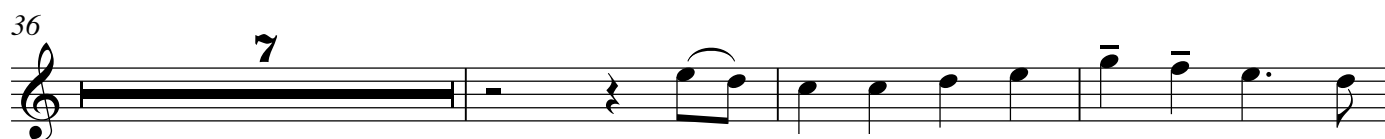
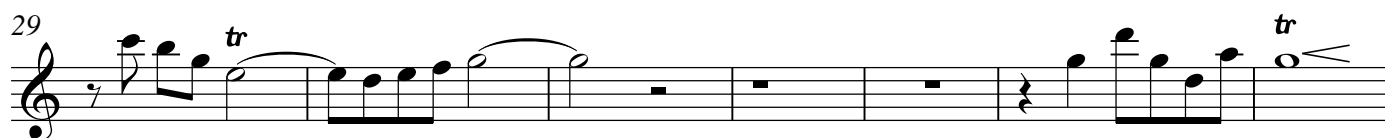
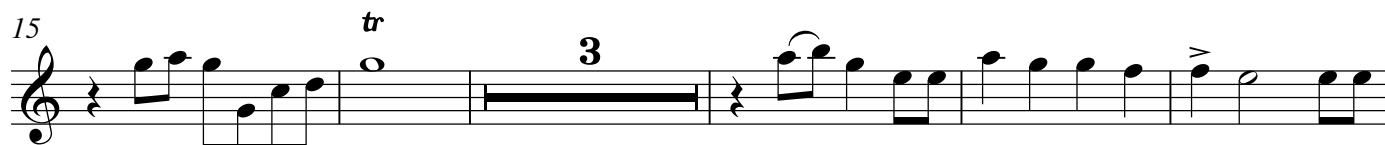
I Have Work Enough to Do

Women's Choir, Piano and Flute

Josephine Pollard

William J. Kirkpatrick
Arr. By Marlene D. Bartlett

With Feeling ♩ = 95-105



59

f

64

mp

71

76 *rit.* *tr*

80

This musical score for Flute spans measures 59 to 80. The key signature is two sharps (F# and C#), and the time signature is 4/4. The score is divided into five systems. The first system (measures 59-63) begins with a forte (*f*) dynamic and features a melodic line with eighth and sixteenth notes. The second system (measures 64-70) starts with a mezzo-piano (*mp*) dynamic, includes a crescendo hairpin, and features a melodic line with eighth notes and a half note. The third system (measures 71-75) continues the melodic line with eighth notes and a half note. The fourth system (measures 76-79) begins with a ritardando (*rit.*) marking and includes a trill (*tr*) on the eighth note of measure 77. The fifth system (measures 80-84) concludes the passage with a melodic line and a final double bar line.