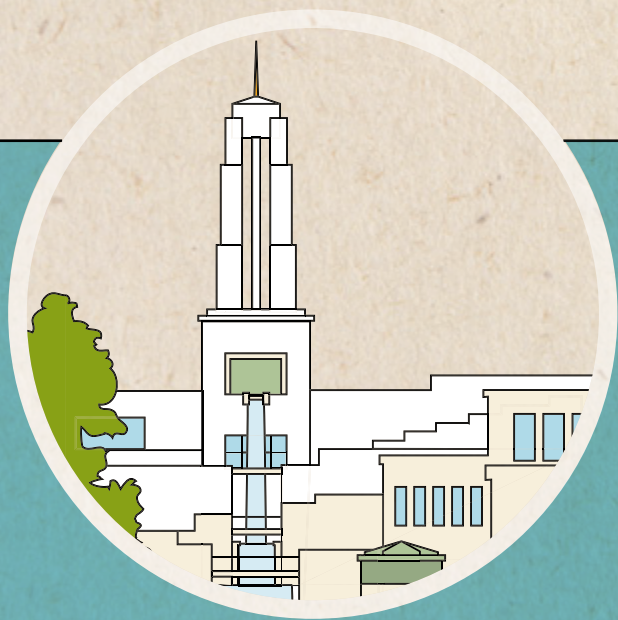


TUSIGAMANATU O LE
KONAFESI
AOAO



O LOU TIALA
E SAUNIA
AI MO MA
AOAO MAI
LE KONAFESI
AOAO

MASINA:

TAUSAGA:

O SE FAAOPOOPOGA I LE *LIAHONA*



**E MAFAI ONA
FESOASOANI LAU
TUSIGAMANATU I LE:**

*Sau, Mulimuli Mai ia te A'u, Aoga Sa;
seminare; ma suesuega faaletagata
lava ia ma faaleaiga.*

**FAASOA
ATU AU
FAAMATALAGA
TUSITUSIA!**

Imeli atu i latou i le **liahona@
ChurchofJesusChrist.org**.

O LE KONAFESI AOAO O SE TAIMI OFOOFOGIA LEA E SAILI AI MA MAUA SE FAAALIGA FAALETAGATA LAVA IA.

E te manao i se aafiaga matagofie o le aoaoina mai le konafesi aoao? *Sauni* mo le konafesi ao lei taitai, *faalogo* i le taimi o le konafesi, ma *suesue i ai* pe a maea. O le a e latalata atili atu i le Tama Faalelagi ma e tatalaina faitotoa mo le taitaiga faaletagata lava ia. Faaoga le konafesi lenei e fesoasoani ia te oe e saili tali ma aoao ai i mea e mafai ona e faia e tuputupu ae ai faaleagaga.

O LE A LE MEA O I TOTONU:

E Amata Sauniuniga linei	2	Tusi Musumusuga i Lalo.....	8
Au Peresitene Sili ma le Korama a Aposetolo e Toasefululua	3	Musumusuga na Maua	26
Fesili ma Tali	4	Autu Na E Matauina	27
Fatu se Taaloga o le Konafesi.....	6	O le a Nei le Mea o le a fai?	28
		O La'u Molimau	29

E mafai ona e auai i le
**conference.ChurchofJesus
Christ.org**

MANAOMIA NISI KOPI?

E mafai ona e siiina mai ma lolomiina le tusigamanatu lenei i le **conference.ChurchofJesusChrist.org**.

© 2020 Puletaofia e le Intellectual Reserve, Inc.
Ua taofia aia tatau uma.

Ua tuuina atu le faatagaga e toe lolomiina ai lenei tamaitusi mo le faaaogaina e le tagata lava ia ae le faapinisini. E aofia i lenei mea le faatagaga e mo taitai o le uarota e lolomi ai se aofaiga latiiti o kopi mo i latou o loo latou auuina atu i ai i le tulaga lautele o o latou valaauga. E tatau ona lolomiina atoa tamaitusi. E le o aofia ai i lenei mea le faatagaga e tuu ai i luga o le initoneti, fetuunai mo se isi faamoemoega pe tufatufa atu lenei anomea. Soo se faaaogaina faaopoopo o lenei anomea e manaomia ai se faatagaga.

permissions.ChurchofJesusChrist.org

E amata sauniuniga **IINEI.**

O le konafesi aoao o se auala sili lea e maua ai musumusuga ma le taitaiga. O le a sili atu se aafiaga e te maua pe a e vave saunia ina ia maua se faaaliga faaletagata lava ia.

Amata sauniuni!

Na e tatalo mo failauga ma taitai o le Ekalesia?

Pe na e mafaufau i fesili o loo sailia tali e uiga i ai?

O LE AU PERESITENE SILI

Lagolagoina i le aso 14 Ianuari, 2018.



**PERESITENE
DALLIN H. OAKS**
*Fesoasoani Muamua
lagolagoina o se Aposetolo: 1984*



**PERESITENE
RUSSELL M. NELSON**
*Peresitene o le Ekalesia
lagolagoina o se Aposetolo: 1984*



**PERESITENE
HENRY B. EYRING**
*Fesoasoani Lua
lagolagoina o se Aposetolo: 1995*

O LE KORAMA A APOSETOLO E TOASEFULULUA



**PERESITENE
M. RUSSELL BALLARD**
lagolagoina: 1985



**ELDER
JEFFREY R. HOLLAND**
lagolagoina: 1994



**ELDER
DIETER F. UCHTDORF**
lagolagoina: 2004



**ELDER
DAVID A. BEDNAR**
lagolagoina: 2004



**ELDER
QUENTIN L. COOK**
lagolagoina: 2007



**ELDER
DALE G. RENLUND**
lagolagoina: 2008



**ELDER
NEIL L. ANDERSEN**
lagolagoina: 2009



**ELDER
RONALD A. RASBAND**
lagolagoina: 2015



**ELDER
GARY E. STEVENSON**
lagolagoina: 2015



**ELDER
DALE G. RENLUND**
lagolagoina: 2015



**ELDER
GERRIT W. GONG**
lagolagoina: 2018



**ELDER
ULISSES SOARES**
lagolagoina: 2018

F&T:

Tusi i lalo fesili o loo i ai i lou olaga e te manao ai i se taitaiga. Ona tusi lea o au tali ma lagona i le taimi o le konafesi.

**O LOO I AI SE
OA NATIA O
LE TAITAIGA
FAALELAGI O LOO
FAATALITALI MO
LOU MAUAINA
I SAVALI O LE
KONAFESI AOAO.**

Elder Neil L.
Andersen¹

O A'U FESILI:

TALI:

O A'U FESILI:

TALI:

O A'U FESILI:

TALI:

O A'U FESILI:

TALI:

FATU SE TAALOGA O LE KONAFESI

E te manao e fesoasoani ia te oe lava ia ia taulai atu i le konafesi—ma faia sina mea malie ao e faia? Fatu sau oe lava taaloga o le konafesi!

Ao lei faia le konafesi, tusi se autu i sikuea taitasi. Ao e matamata, faalogo mo na autu ma kava le sikuea i se faailoga pe a ta'ua le autu. E mafai ona e faaaogaina soo se mea mo se faailoga—ae mo se isi mea malie, faataitai se fasi lole po o se sukalati! Filifili ni au lava mamanu e malo ai—lima i autafa, lalo, po o le faasipa; fa tulimanu; ogatotonu le iva; ma isi mea faapena

Vaavaai mo ni manatu o autu? Mafaufau i mea e pei o le “malumalu,” “Sau, Mulimuli Mai ia te A'u,” pe pe a valaauina se failauga e ala i le igoa e se isi failauga.

**E TOETOE LAVA A OO MAI E
LE AUNOA FAAALIGA I SE TALI
O SE FESILI.**

Elder Jeffrey R. Holland²

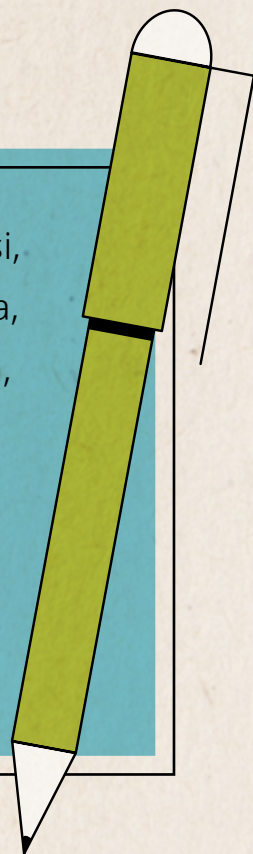


Malumalu

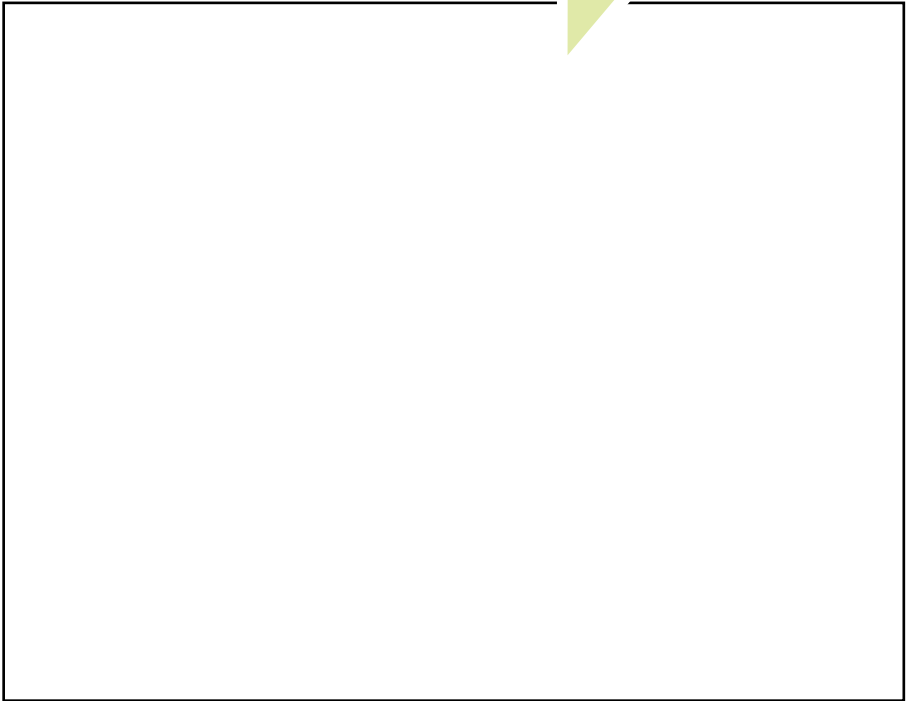


Tusi musumusuga **I LALO.**

Talu ai ua iu ina oo mai lava le konafesi, faalogo mo ni tali. Tusi i lalo ni uunaiga, vaavaai mo ni faamanuiaga folafolaina, ma gauai sili atu i mea e te lagona le musuia e galue ai. Tusi i lalo ni upusii e uunaia ai oe, ma tusi ni savali e tu matilatila mai ia te oe.



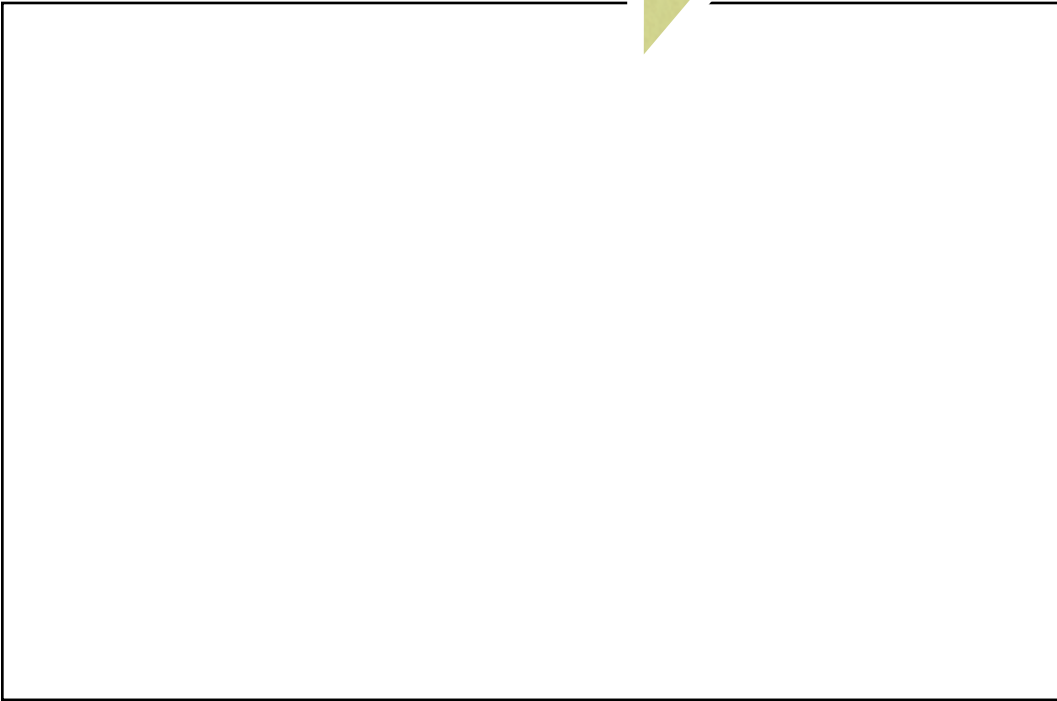
FAAMATALAGA: _____



**FAAMANUIAGA
FOLAFOLAINA:**

**O LE A SE MEA O LE A
OU FAIA NEI?**

FAAMATALAGA: _____



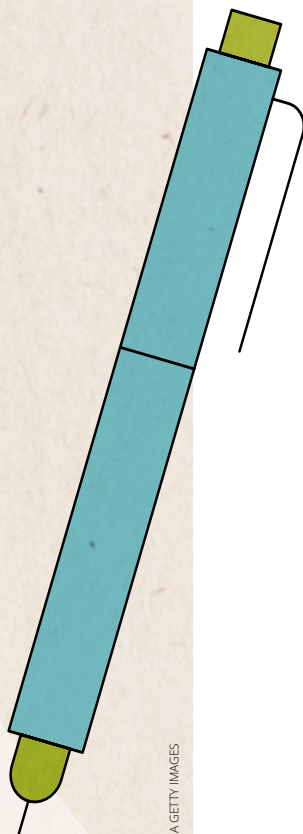
**O FAAALIGA O SE MEA MONI
LAVA. E OO MAI I LE ALA A
LE ALII E TUSA MA LE TAIMI
FAATULAGAINA A LE ALII.**

Peresitene Dallin H. Oaks⁴

FAAMATALAGA:

**OU TE FOLAFOLA ATU IA TE
OE AFAI O LE A E FAIA MA LE
LOTO FAAMAONI MA TUMAU
AI PEA LAVA I LE GALUEGA
FAALEAGAGA E MANAOMIA
E ATINA'E AI LE TOMAI TAU,
FAALEAGAGA O LE AOA PE
FAAPEFEA ONA FAALOGO I
MUSUMUSUGA A LE AGAGA
PAIA, O LE A E MAUA TAITAIGA
UMA O LE TAITAIGA O LE A E
MANAOMIA I LOU OLAGA.**

Peresitene Russell M. Nelson⁵



ATAPUE AGETY IMAGES

MASINA
1 2 3 **4** 5 6 7 8 9 **10** 11 12

SAUNIGA
1 2 3 4 5

ITUAIIGA O SAUNIGA
aoao | sauniga a tamaitai | sauniga a le perisitua

**FAAMANUIAGA
FOLAFOLAINA:**

**O LE A SE MEA O LE A
OU FAIA NEI?**

FAAMATALAGA: _____



**A O TATOU Ā'EA LE ALA
O LE AVEA MA SOO, E
MAFAI ONA FAAPAIAINA
I TATOU E ALA I LE ALOFA
TUNOA O KERISO.**

Sister Michelle Craig⁷

FAAMATALAGA:

**UPUSII E SILI ONA
FIAFIA I AI:**

**FAAMANUIAGA
FOLAFOLAINA:**

**O LE A SE MEA O LE A
OU FAIA NEI?**

**O TUSITUSIGA PAIA MA UPU A
APOSETOLO MA PEROFETA O
ASO NEI O NI PUNAVAI IA O LE
ATAMAI, POTO FAALELAGI, MA
FAAALIGA FAALETAGATA LAVA
IA E FESOASOANI IA I TATOU E
SUE AI TALI I LUITAU UMA O
LE OLAGA.**

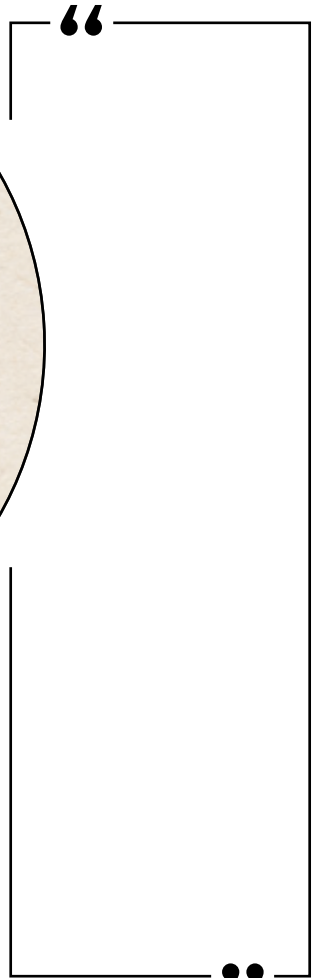
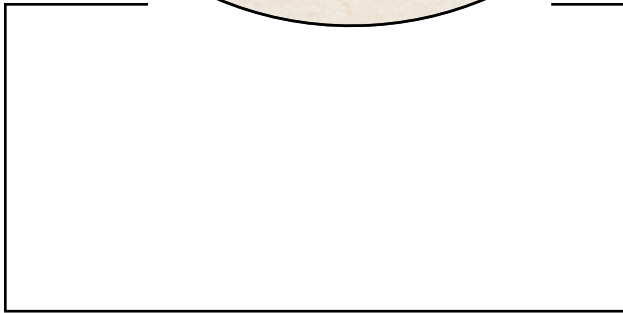
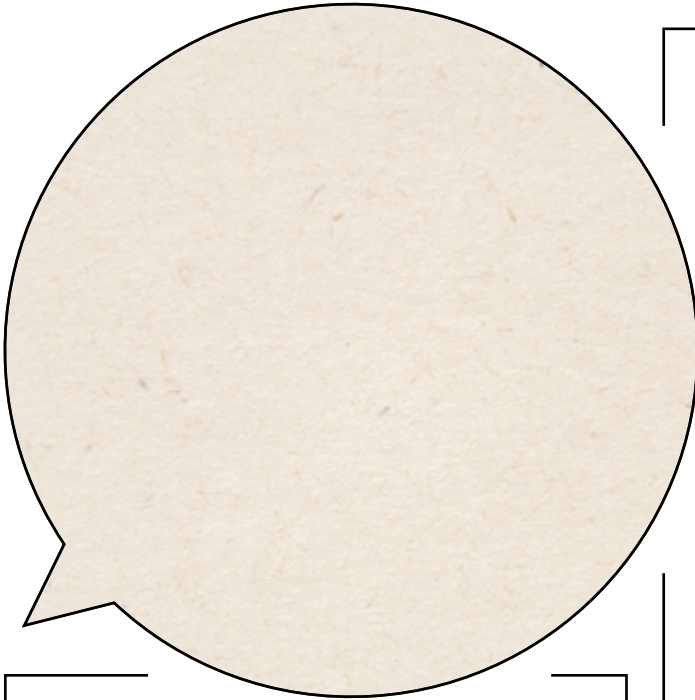
Elder Dieter F. Uchtdorf⁸

MASINA
1 2 3 **4** 5 6 7 8 9 **10** 11 12

SAUNIGA
1 2 3 4 5

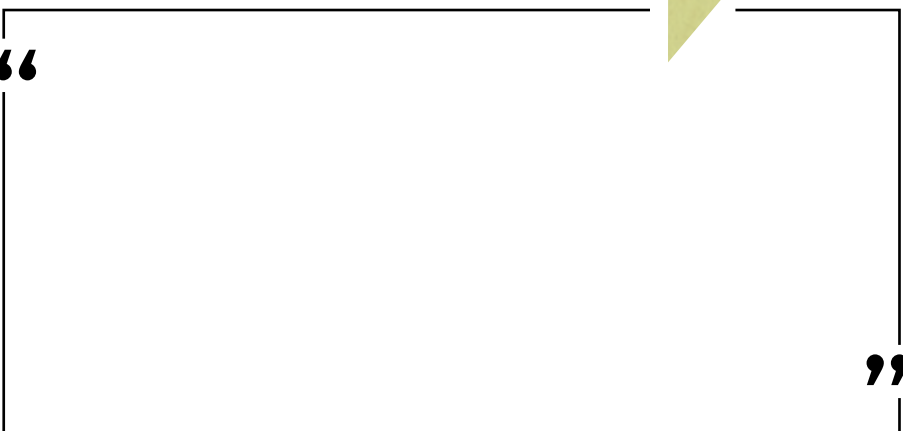
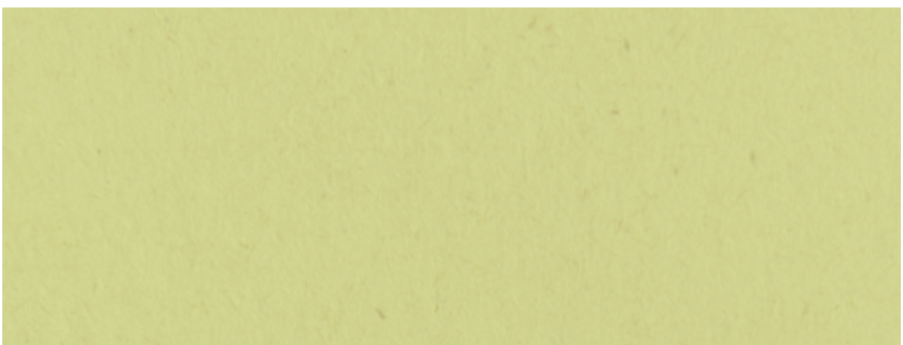
ITUAIIGA O SAUNIGA
aoao | sauniga a tamaitai | sauniga a le perisitua

FAAMATALAGA: _____

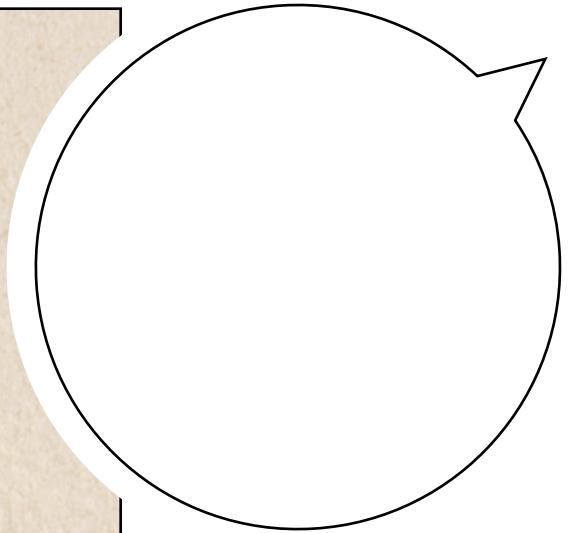


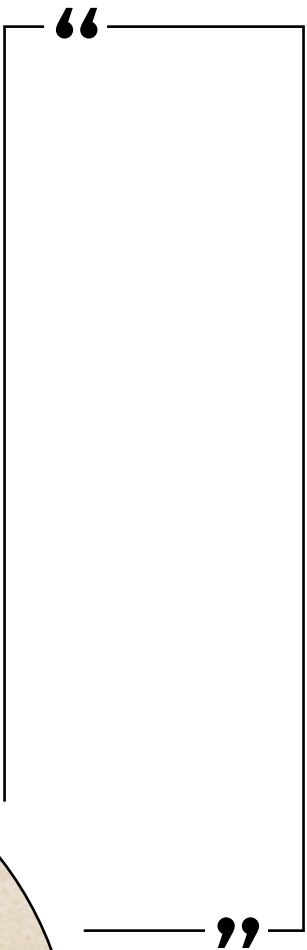
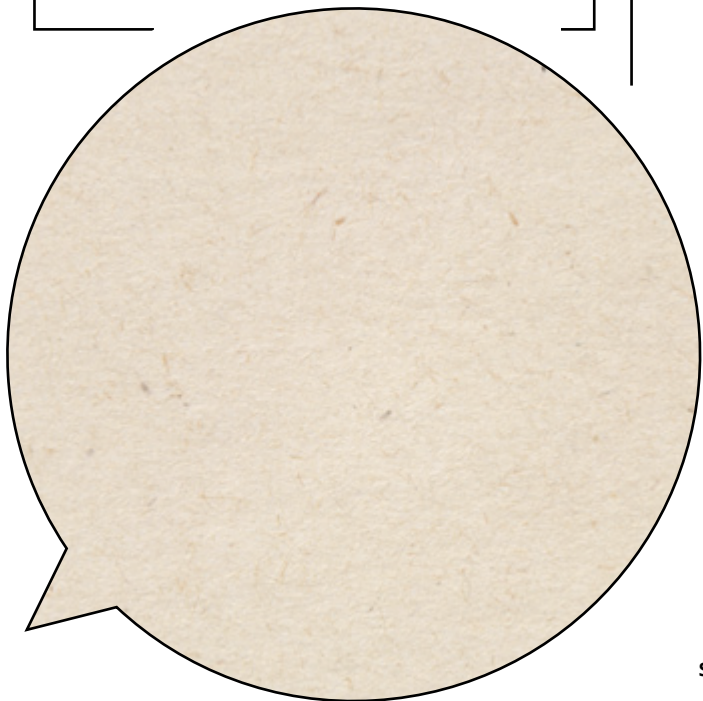
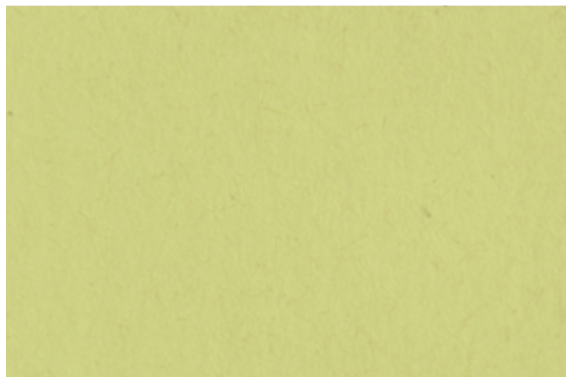
**O LE AOA O E ALA
I LE FAATUATUA E
MANAOMIA ONA TUU
I AI LE FAALEAGAGA, O
LE MAFAUFAU, MA LE
TAUMAFIIGA FAALETINO
AE LE TAU LAVA INA
TALIA.**

Elder David A. Bednar⁹



FAAMATALAGA: _____





**E MAFAI ONA
TATOU ILOAINA
LE ALII MA
FAALAGOLAGO IA
TE IA PE A TATOU
"TAUMAMAFI FIAFIA
I AFIGA A KERISO."**

Sister Bonnie H. Cordon¹⁰

Musumusuga NA MAUA.

Talu ai ua maea le konafesi, o le a le mea e sosoo ai? Na e lagona le musuia e suia pe faia se mea ese i lou olaga? Faaalu sina taimi e faatulaga ai ou manatu, saunia se fuafuaga, ona galue lea i ai.

FAATAITAIGA O LE FUAFUAGA E FAATINO AI:

1. Toe faaleleia faaleagaga lo'u potu
2. [Tusi] e le aunoa i le apitalaaga

FAATAITAIGA O AUTU:

- Aoaoina o le talalelei e faatotonugalemu-i-le-aiga
- Tapuai i le malumalu
- Mulimuli i le Faaola

E FAAPEFEA ONA OU FAALELEIA?

O AUTU NA E MATAUINA

O le a se mea na sili ona tu matilatila mai ia te oe? Tusi i lalo nisi o autu nei, ma mafaufau e uiga i o latou uiga patino ia te oe ma lou olaga.

AUTU:

AUTU:

TA'UA E:

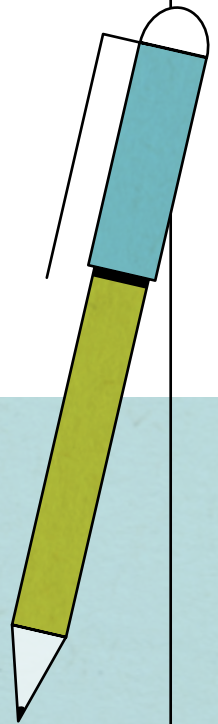
TA'UA E:

O LE MEA NA OU AOAONA:

O LE MEA NA OU AOAONA:

O LE A NEI LE MEA O LE A FAI?

A maea le konafesi, faaalu sina taimi e toe iloilo ai au faamatalaga na tusitusi. Tusi i lalo mea e te lagona le musuia e faia, pe fai se lisi o ni sini e te manao e te galue ai.



O LA'U MOLIMAU

Na faapefea ona tuputupu ae la'u molimau i le aluga o lenei konafesi?

FAAMATALAGA

1. Neil L. Andersen, "O Le Siufofoga o le Alii," *Liahona*, Nov. 2017, 125.
2. Jeffrey R. Holland, "Aua Le Lafoai Ai Lo Outou Faamalosi," *Liahona*, Mati. 2000, 9.
3. Russell M. Nelson, "Faaaliga mo le Ekalesia, Faaaliga mo o Tatou Olaga," *Liahona*, Me 2018, 95.
4. Dallin H. Oaks, "I Lana Lava Taimi, i Lana Lava Ala," *Liahona*, Aok. 2013, 27.
5. Russell M. Nelson, "Faamoemoe o Isaraelu" (faigalotu a le autalavou i le lalolagi atoa, 3 Iuni, 2018), HopeofIsrael.ChurchofJesusChrist.org.
6. Ronald A. Rasband, "Aua Le Atuvale," *Liahona*, Nov. 2018, 20.
7. Michelle D. Craig, "Lagona Lē Mautonu," *Liahona*, Nov. 2018, 55.
8. Dieter F. Uchtdorf, "O Mataupu Faavae e Lua mo Soo se Tamaoaiga," *Liahona*, Nov. 2009, 58.
9. David A. Bednar, "Saili e Aoao e Ala i le Faatuatua," *Liahona*, Sete. 2007, 64.
10. Bonnie H. Cordon, "Ia Faatuatua i le Alii a e Aua le Faalagolago," *Liahona*, Me 2017, 6.
11. Sharon Eubank, "O Keriso: O Le Malamalama e Susulu i le Pogisa," *Liahona*, Me 2019, 75.

UUNAIGA MO OE!

**Ua silafia e le Alii le malosi o loo outou
taumafai ai. O loo outou alualu i luma.**

Ia faaauau pea.

Sister Sharon Eubank¹¹

MANAOMIA NISI KOPI?

Sii mai ma lolomi le tusigamanatu lenei i le
conference.ChurchofJesusChrist.org.

O LE EKALESTIA A
IESU KERISO
O LE AU PALA O ASO
E GATA AI