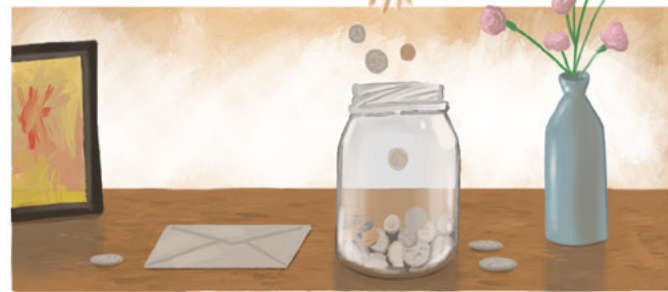


WHERE TITHING MONEY GOES

What happens to the money you pay for tithing?



You earn money.



You donate 10 percent of your income for tithing (see Doctrine and Covenants 119).



You give your tithing to a member of your bishopric or branch presidency or submit it online at donations.lds.org.



At Church headquarters, the First Presidency, Quorum of the Twelve Apostles, and Presiding Bishopric are the Council on the Disposition of the Tithes (see Doctrine and Covenants 120). As directed by the Lord, they make inspired decisions on how these sacred tithing funds will be used.



Constructing and maintaining temples, churches, and other Church-owned buildings



Operating Church-education programs



Printing scriptures and other materials



Doing family history research



Providing welfare and humanitarian efforts



Doing missionary work



Providing Church activities for fellowshipping among ward or branch members

TITHING MAY BE USED FOR:

LEARN MORE

- Elder David A. Bednar, "The Windows of Heaven," October 2013 general conference
- Malachi 3:7-18
- "Tithing," *True to the Faith* (2004), 180-82

ILLUSTRATIONS BY DAVID GREEN